

Video Panorama



Overview

Video Panorama dynamically and seamlessly joins or stitches multiple videos into one large panoramic view in real time. Further the Video Panorama can act like an IP camera streaming the combined output.

Currently, most CCTV, DVR, and video management systems provide multiplexed views where each camera view is displayed in a window or box. The video images provide disjointed and fragmented views of the area being monitored. This places extra burden on the users watching monitors.

Video Panorama provides a real time panoramic view to simulate human eyes. Security personnel can now view multiple adjacent cameras as a complete scene. This enables them to have complete situational awareness. For example, a person moving back and forth across multiple cameras can be easily identified as a loiterer in a combined, panoramic view rather than in individual camera views. Advanced motion detection, counting etc. can be added as optional products.

Benefits

Video Panorama offers the following benefits:

- Provides complete situational awareness for security personnel. Facilitates rapid decision making and response. Allows users to scan entire scenes quickly rather than monitor fragmented views.
- Create a Virtual IP camera with Video Panorama. The panorama output will act like an IP camera for many DVRs, NVRs.
- Improves productivity of security personnel. Fewer security people can monitor larger number of cameras.
- Enables better event and threat detection by providing the ability to correlate events across a scene. This is not feasible from fragmented, disjointed cameras or views.
- Remote viewing capabilities allow multiple locations to be monitored simultaneously.
- With Intelligent Video, user can do motion detection, counting etc. on the stitched Panoramic view

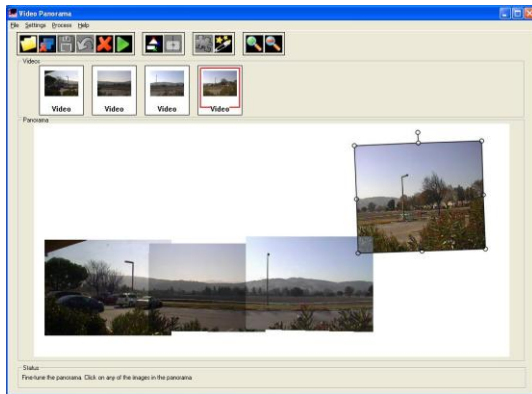


Video Panorama

Features

Video Panorama offers several flexible product features.

- Works with standard Color, B/W, IR and thermal cameras. Supports NTSC, PAL and Composite Video In and Out.
- *Input:* Analog, Digital, Network
- *Output:* Local display on monitor, IP/Network (for remote viewing)
- Flexible video resolutions: D1 (640x480) and CIF (320x240)
- Simple on-screen configuration with easy and automated stitching capabilities.
- Web server streaming via LAN/Internet.



Applications

Video Panorama can be used for:

- Secure facilities with real-time monitoring by security personnel
- Secure facilities with real-time monitoring from a remote location
- Transportation, Entertainment, and other public locations to ensure safety and security
- Retail Chains where video cameras are installed to reduce vandalism and theft
- Financial Institutions and Banks to ensure safety and security for employees and customers
- Enterprise and commercial security

Hardware Specifications

Video Panorama is available in the following full solution or Software only configurations:

Full Solution (Hardware and Software)

1. **Rackmount Server.** This is provided on a 2U Rackmount server with pre-installed software. Customers can add cameras and monitors of their choice to deploy the system.
2. **Mini PC System.** This product option is available for customers that need a smaller footprint. Customer can add cameras and monitors of their choice to deploy the system.



Software Only:

3. **Video Panorama Software.** This full application software only product can be purchased and deployed on most PC based servers.
4. **Software (API/SDK).** This option is available for OEMs that would like to embed their own Video Panorama own video management software, DVR, or other application.

About IntelliVision

IntelliVision is a leader in "Video Intelligence and Automated Monitoring" solutions for Security & Surveillance markets. Our products have been successfully deployed at several Government and Enterprise customers providing high reliability and running 24/7/365. IntelliVision is headquartered in USA with offices in Europe & Asia.

IntelliVision

6203 San Ignacio Ave. Suite 112
San Jose, CA 95119, USA
P: 408-754-1690 F: 408-716-7900
sales@Intelli-Vision.com
www.Intelli-Vision.com

IntelliVision

Video Intelligence and Automated Monitoring