

IntelliSearch



Overview

IntelliSearch is a fast, powerful video search solution. It enables forensic search on video archives recorded on DVRs, NVRs and Video management solutions. It can also provide real-time search on live video feeds from an analog, IP/network or digital camera.

Video search, particularly forensic search, is time critical. When an incident happens, there is enormous pressure on security professionals to quickly reconstruct events from archived video. Currently, security professionals go through time-consuming human review of archived video to do this. IntelliSearch provides an automated way to quickly search through video for motion/activity, for object by size, color, speed and direction of motion.

Benefits

IntelliSearch offers the following benefits:

- Enables security professionals to rapidly search for past incidents from archived video
- Allows security professionals to respond to incidents in a timely manner
- Allows search across multiple cameras or channels to reconstruct past events or incidents
- Advanced search capabilities allow powerful search based on object types and other criteria.
- Increase productivity and efficiency of the security professionals. Improves security.

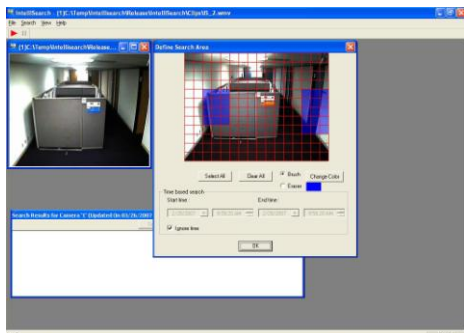


IntelliSearch

Features

IntelliVision has powerful and flexible features:

- **Input:** Works with analog, IP/Network and digital cameras. It can also take video input from many DVR and NVR/video management solutions.
- **Output:** Output of Visual search results including images, timestamps. Reports and HTML pages.
- Remote Search tools.
- On-Demand search, on any channel. When search data is not indexed or ready, system will review the video and show search results.
- Be able to have 1 or more channels "Search-Ready". When a channel is indexed and search ready, the product provides search results almost instantaneously
- Review search results and view the scene.



Applications

IntelliSearch can be used for:

- All facilities that use video surveillance / cctv systems including DVRs, NVRs, and video management solutions
- Airport, Ports, Maritime and Govt institutions.
- Enterprise and commercial security
- Entertainment, Casinos and Gaming
- Retail stores
- Financial Institutions and Banks
- Urban and Public area monitoring
- Law Enforcement & Transportation

Hardware Specifications

IntelliSearch is available in the following full solution or Software only configurations:

Full Solution (Hardware and Software)

1. **Rackmount Server.** This is provided on a 1U or 2U Rackmount server with pre-installed software. Customers can add cameras and monitors of their choice to deploy the system. System requirements:

- Standard Pentium PC (1 channel)
- Dual-Core Xeon (4 channel)
- Dual-Core Dual Processor (8 Channel)
- 1-2GB memory
- 120-240 GB Hard disk, based on channels
- 1G Ethernet
- Windows XP OS

Software Only:

2. **IntelliSearch Software.** This full application software only product can be purchased and deployed on most PC based servers.

External System Integration:

3. **Software (API/SDK).** This option is available for OEMs that would like to embed IntelliSearch into their own video management software, DVR, NVR or other application. We provide C++, ActiveX and Direct Show based API/ADK integration.

About IntelliVision

IntelliVision is a leader in "Video Intelligence and Automated Monitoring" solutions for Security & Surveillance markets. Our products have been successfully deployed at several Government and Enterprise customers providing high reliability and running 24/7/365. IntelliVision is headquartered in USA with offices in Europe & Asia.

IntelliVision

6203 San Ignacio Ave. Suite 112
San Jose, CA, 95119, USA
P: 408-754-3150 F: 408-716-7900
www.Intelli-Vision.com
sales@Intelli-Vision.com
support@Intelli-Vision.com

IntelliVision

Video Intelligence and Automated Monitoring